



GIG  
CYMRU  
NHS  
WALES

Iechyd Cyhoeddus  
Cymru  
Public Health  
Wales

# Novel Coronavirus (COVID-19)

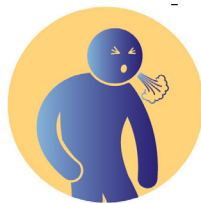
If you have returned from these specific areas:

- Iran
- Daegu or Cheongdo in South Korea
- lockdown areas in northern Italy
- Hubei Province (returned in the past 14 days)

**Make your way to your residence.  
Stay indoors and call NHS 111  
even if you do not have symptoms**



If you have been to **China, Thailand, Japan, Republic of Korea, Hong Kong, Taiwan, Singapore, Malaysia, Macau, Vietnam, Cambodia, Laos, Myanmar, Italy** outside of the lockdown areas in the last 14 days and have any of these symptoms:



**Cough**



**Fever**



**Difficulty breathing**

**Please do not enter the GP Surgery.**

Telephone the GP Surgery reception on:

If you are very unwell please inform the receptionist at the beginning of your call.

Visit [phw.nhs.wales/coronavirus](https://phw.nhs.wales/coronavirus) for more information