



GIG
CYMRU
NHS
WALES

Iechyd Cyhoeddus
Cymru
Public Health
Wales

Novel Coronavirus (COVID-19)

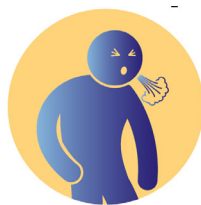
If you have returned from these specific areas:

- Iran
- Daegu or Cheongdo in South Korea
- lockdown areas in northern Italy
- Hubei Province (returned in the past 14 days)

**Make your way to your residence.
Stay indoors and call NHS 111
even if you do not have symptoms**



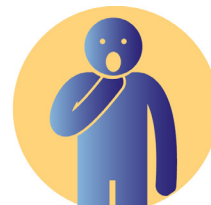
If you have been to **China, Thailand, Japan, Republic of Korea, Hong Kong, Taiwan, Singapore, Malaysia, Macau, Vietnam, Cambodia, Laos, Myanmar, Italy** outside of the lockdown areas in the last 14 days and have any of these symptoms:



Cough



Fever



**Difficulty
breathing**

Please do not enter the Emergency Department.

Telephone the Emergency
Department Reception on:

If you are very unwell please inform the receptionist at the beginning of your call.

Visit phw.nhs.wales/coronavirus for more information