

cybermedia

Actifadu Practis EMIS Theseus

Fersiwn: 1.0

Cyhoeddwyd gan: Cyber Media Solutions Ltd.

Dyddiad cyhoeddi: 18/12/2023



FS 643660 EMS 643659

Unwaith y byddwch wedi derbyn cadarnhad bod eich practis wedi'i alluogi i ddefnyddio porth Theseus, yna mae angen ei roi ar waith ar lefel practis.

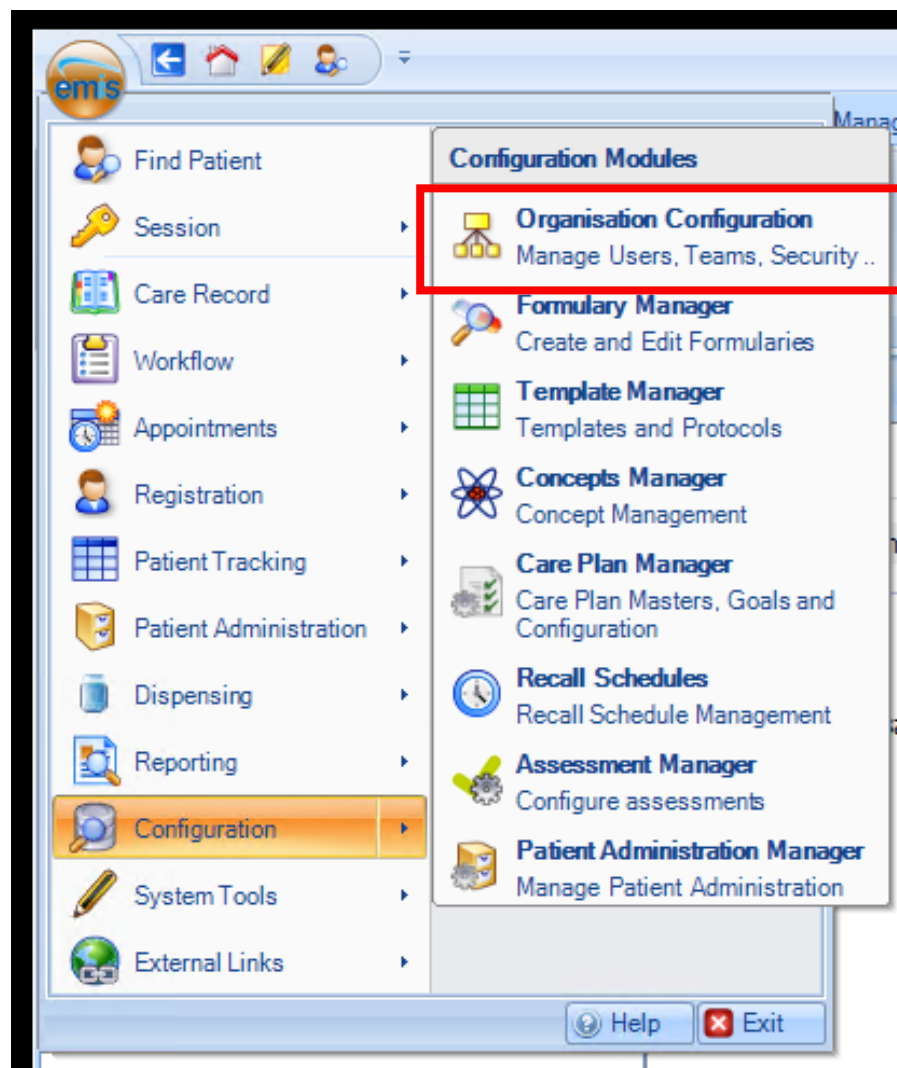
Mae'r ddogfen hon yn eich arwain trwy'r camau gosod untro ar gyfer eich practis. Bydd gan bob defnyddiwr fynediad i Borth Theseus yn eich practis unwaith y bydd wedi'i actifadu.

Actifadu Porth Theseus

Mae sawl nodwedd i'w gwirio i gadarnhau bod eich system EMIS a Theseus wedi'u ffurfweddu'n gywir.

1. Yn EMIS Web, ewch i:

EMIS Ball → Configuration → Organisation Configuration



2. Cliciwch ar “Organisation” o'r ddewislen ar waelod chwith y sgrin

EMIS V

Organisation Configuration | Formulary Manager | Template Manager | Concepts Manager | Care Plan Manag

Add |
 Edit User |
 Search |
 Activate |
 Deactivate |
 Reset Password |
 Mark Out of Office |
 Mark In Office |
 Disassociate Smart Card |
 Re-Sync Smart Card |
 Synchronise Users Details |
 Change Job Category

Actions

GP2GP - 10 (10) | Documents - 133

Users

- Partner Programme Test 17
 - Admin/Clinical Support
 - Biomedical Scientist
 - Clerical
 - Clerical Manager
 - Clinical Practitioner
 - Health Professional
 - Health Records Manager
 - Healthcare Student
 - Nurse
 - Receptionist
 - Systems Support

Name

- Admin/Clinical Support
- Biomedical Scientist
- Clerical
- Clerical Manager
- Clinical Practitioner
- Health Professional
- Health Records Manager
- Healthcare Student
- Nurse
- Receptionist
- Systems Support

(No data)

MAXIMS OCS MIG

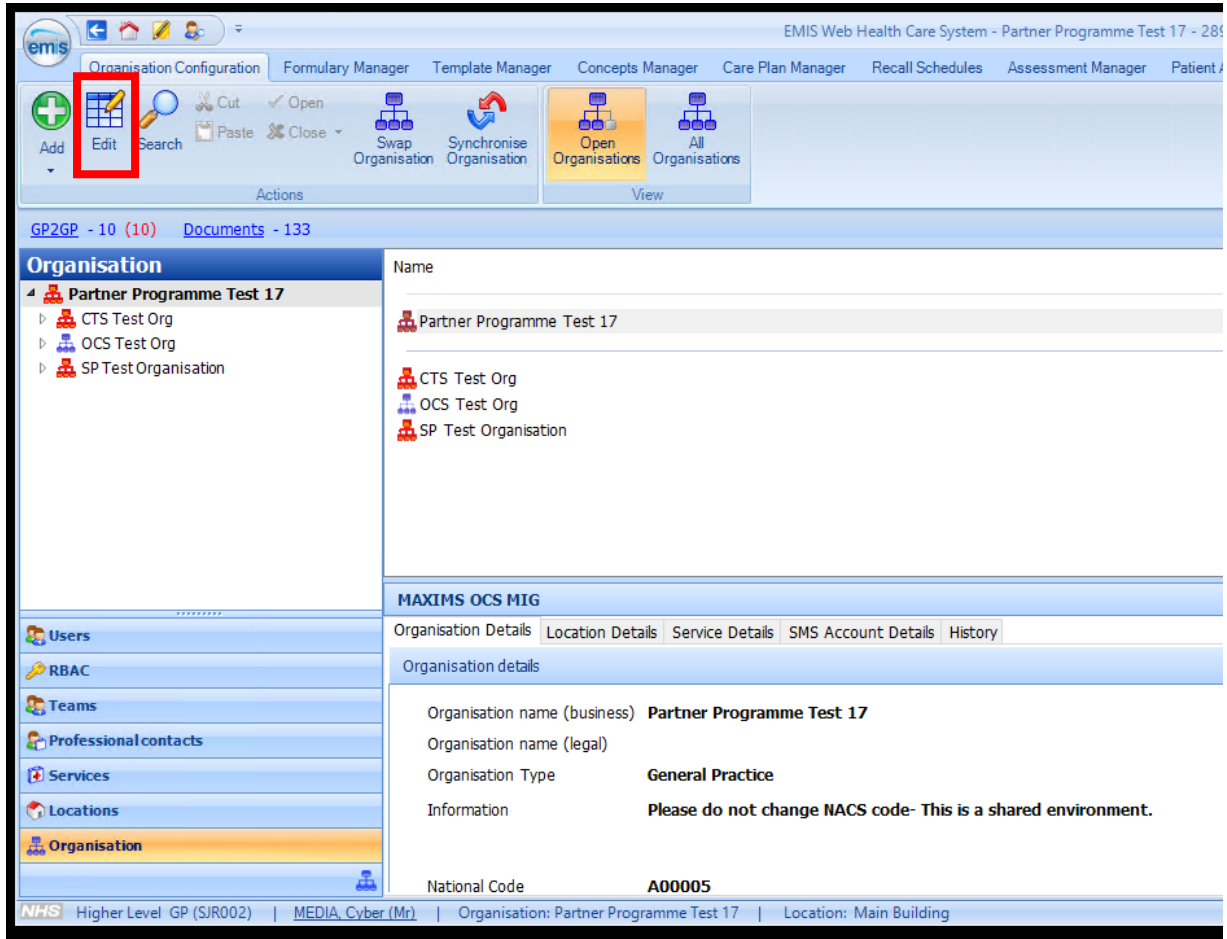
Organisation Details | Location Details | Service Details | SMS A

Organisation details

Organisation name (business) **Partner Programme Tes**
 Organisation name (legal)
 Organisation Type **General Practice**
 Information **Please do not change N**
 National Code **A00005**

NHS | Higher Level GP (SJR002) | MEDIA, Cyber (Mr) | Organisation: Partner Programme Test 17 | Locati

3. Cliciwch ar y botwm “Edit” o'r ddewislen rhuban ar frig y sgrin



The screenshot displays the EMIS Web Health Care System interface. The top toolbar contains several icons, with the 'Edit' icon (a grid with a pencil) highlighted by a red rectangular box. Below the toolbar, the 'Organisation' section is visible, showing a tree view of organisations under 'Partner Programme Test 17'. The 'MAXIMS OCS MIG' section is also visible, displaying details for the selected organisation.

EMIS Web Health Care System - Partner Programme Test 17 - 285

Organisation Configuration | Formulary Manager | Template Manager | Concepts Manager | Care Plan Manager | Recall Schedules | Assessment Manager | Patient /

Add | Edit | Search | Paste | Close | Swap Organisation | Synchronise Organisation | Open Organisations | All Organisations

GP2GP - 10 (10) | Documents - 133

Organisation

- Partner Programme Test 17
 - CTS Test Org
 - OCS Test Org
 - SP Test Organisation

MAXIMS OCS MIG

Organisation Details | Location Details | Service Details | SMS Account Details | History

Organisation details

Organisation name (business) **Partner Programme Test 17**

Organisation name (legal)

Organisation Type **General Practice**

Information **Please do not change NACS code- This is a shared environment.**

National Code **A00005**

NHS | Higher Level GP (SJR002) | MEDIA Cyber (Mr) | Organisation: Partner Programme Test 17 | Location: Main Building

4. O fewn y sgrin “Edit Organisation”, dewiswch “Theseus Portal” ac yna
 - a. Dewiswch “Enabled” ar gyfer yr opsiwn “ Portal Access”.
 - b. Dewiswch “No” ar gyfer yr opsiwn “Require logon details”
 - c. Cliciwch “OK” i’w arbed

The screenshot shows a software window titled "Edit Organisation: Partner Programme Test 17". On the left is a list of various portals, with "Theseus Portal" selected and highlighted in blue. The main area of the window is titled "Theseus Portal" and contains the following configuration options:

- Portal Description:** Theseus Referrals and Social Prescribing Connector
- Portal access:** Radio buttons for "Disabled" and "Enabled". The "Enabled" option is selected and highlighted with a red box.
- Require logon details:** Radio buttons for "No" and "Yes". The "No" option is selected and highlighted with a red box.
- Username:** A text input field with the placeholder text "Type username".
- Password:** A text input field with the placeholder text "Type new password".
- Confirm password:** A text input field with the placeholder text "Confirm password".

Below the input fields, there is a disclaimer: "EMIS is not responsible for the security of this portal or the data passed through it. Security of this portal and the data passed through it is the responsibility of the portal provider. **Important:** By allowing portal access, you are providing consent for NHS numbers to be shared."

At the bottom of the window, there are four buttons: "Back", "Next", "OK", and "Cancel". The "OK" button is highlighted with a red box.

Unwaith y bydd wedi'i actifadu, bydd Porth Theseus ar gael i bob defnyddiwr yn eich practis.

Sylwch efallai y bydd angen i ddefnyddwyr sydd eisoes wedi mewngofnodi allgofnodi a mewngofnodi eto er mwyn i'r newidiadau ddod i rym ar gyfer eu cyfrif defnyddiwr.